

HUTCHINSON TOWNSHIP

Each township has six files containing six sections in each, and one file containing all 36 sections.

Hutchinson01to06.pdf
Hutchinson07to12.pdf
Hutchinson13to18.pdf
Hutchinson19to24.pdf
Hutchinson25to30.pdf
Hutchinson31to36.pdf
HutchinsonAll36.pdf

The points are listed starting with the point above the SE corner and continuing in a counter-clockwise rotation around the section. This normally begins with the East point, Northeast, then North, but may also include Witness Corners, and/or Meander Corners.

Definitions

Witness Corner: A witness corner “stands in” when the true corner cannot be monumented or occupied because of difficult terrain or obstruction of the corner sight. The witness corner must be on the section line and is usually 5 or 10 chains away from the true corner.

Meander Corner: The intersection of a township, range, or section line and the banks of a navigable stream or meandering body of water.

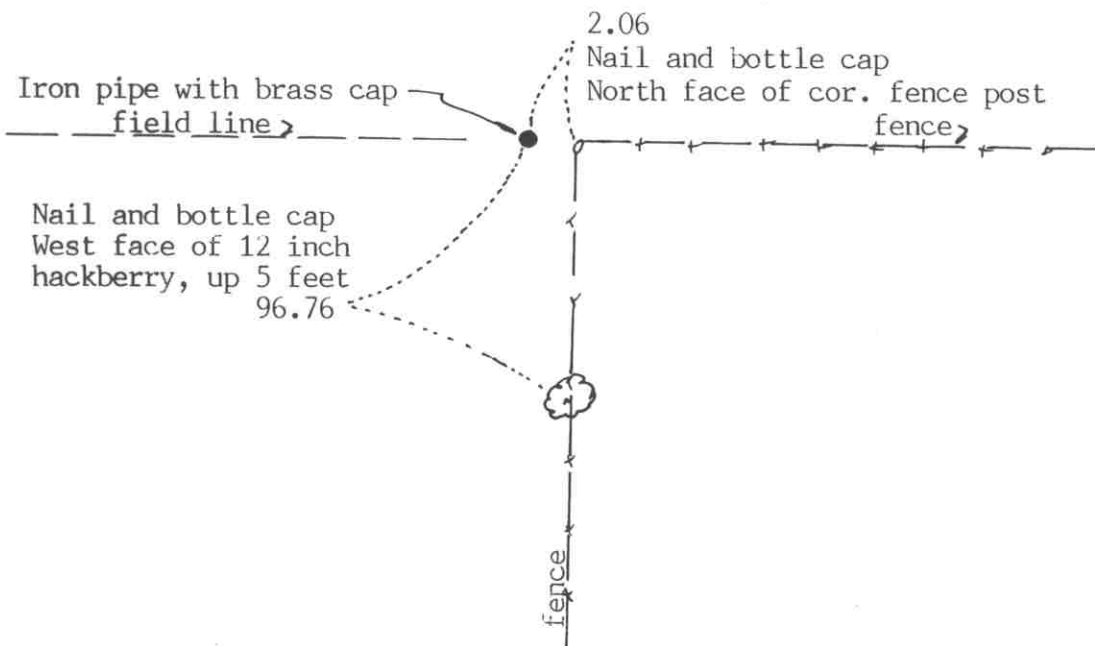
EAST QUARTER corner, Section 7, Township 117 North, Range 29 West

Certificate of Location of Government Corner

SKETCH OF REFERENCE TIES
(NO SCALE)

SECTION 7

SECTION 8



Statement of evidence relative to this corner location on sheet 2

I hereby certify that this document was prepared by me or under my direct supervision.

Willard Pellinen

Willard Pellinen
McLeod County Surveyor
License No. 9626

Date April 15, 1991

OFFICE OF THE COUNTY RECORDER
MCLEOD COUNTY, MINNESOTA.

I hereby certify that this document was filed in this office at 9 o'clock A.M. on the 19th day of April, 1991.

Carmen Ottilie, County Recorder

By _____, Deputy

Document No. 238411

EAST QUARTER corner, Section 7, Township 117 North, Range 29 West***Certificate of Location of Government Corner***

May, 1856. A.H.Runyon of the General Land Office set a post at the corner and marked 2 aspens for bearing trees.

November, 1924. Carlisle Madson, Sr., county surveyor, found an old square oak wood stake down 4 inches below the surface. He set a standard brass monument.

May, 1966. Roy Hansen, surveyor, found the iron pipe with a brass cap set by Madson in 1924.

June, 1967. McCombs Knutson Associates, Dickman Knutson, county surveyor, used the monument in survey in Section 7.

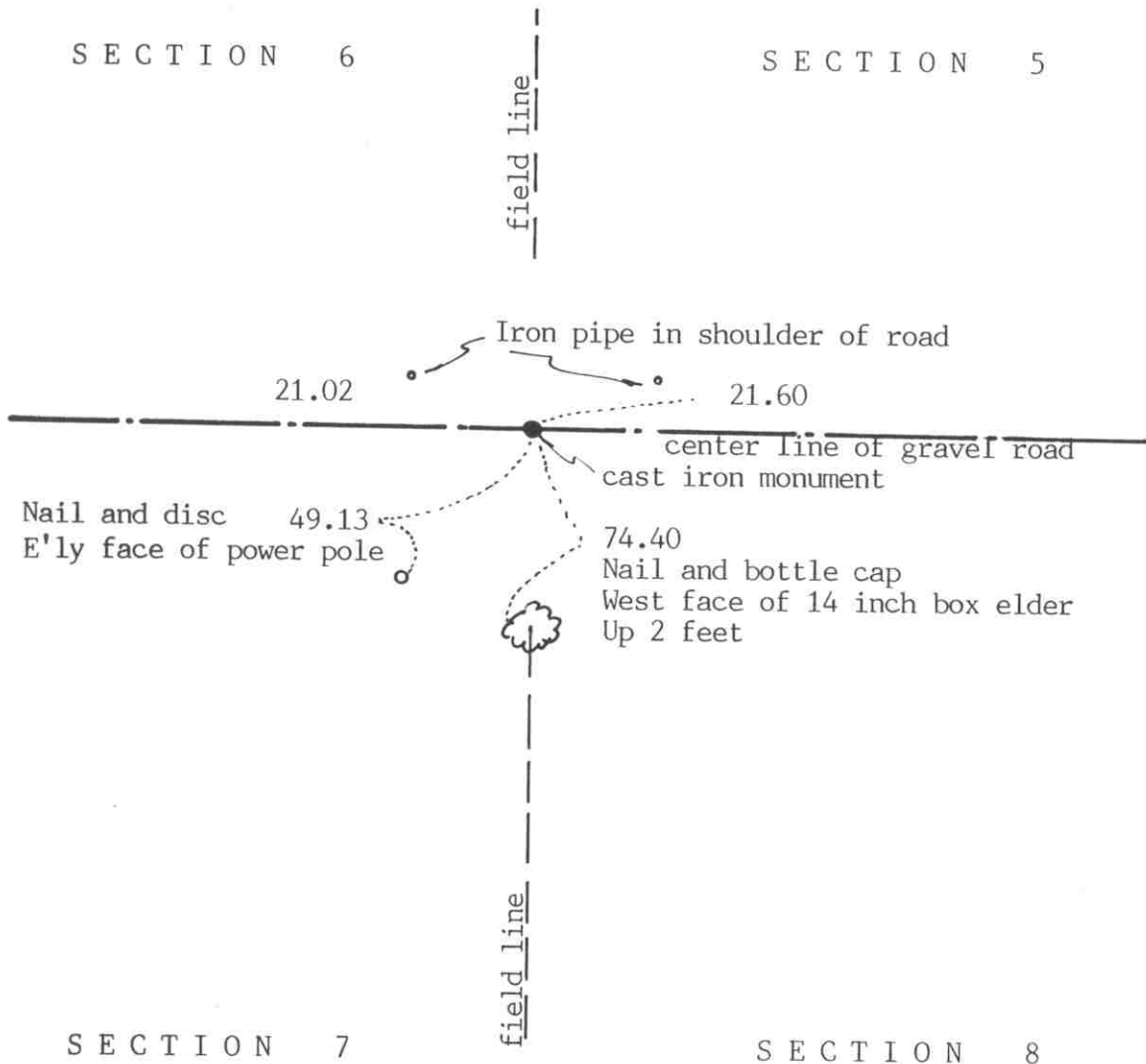
May 4, 1990. We found the brass monument in good condition and took new reference ties.

We accept the monument set by Madson in 1924 as having perpetuated the correct location of the quarter corner.

NORTHEAST corner, Section 7, Township 117 North, Range 29 West

Certificate of Location of Government Corner

SKETCH OF REFERENCE TIES (NO SCALE)



Statement of evidence relative to this corner location on sheet 2

I hereby certify that this document was prepared by me or under my direct supervision.

Willard Pellinen

Willard Pellinen
McLeod County Surveyor
License No. 9626

Date April 15, 1991

OFFICE OF THE COUNTY RECORDER
MCLEOD COUNTY, MINNESOTA.

I hereby certify that this document was filed in this office at 9 o'clock A.M. on the 19th day of April, 19 91.

Carmen Ostlie, County Recorder

By _____, Deputy

Document No. 238410

NORTHEAST corner, Section 7, Township 117 North, Range 29 West

Certificate of Location of Government Corner

May, 1856. A.H.Runyon of the Government Land Office set a post and marked 3 elms and a linden for bearing trees.

April 14, 1925. Carlisle Madson, Sr., county surveyor, found a stone and put in a standard brass monument.

1969. The state highway department found an iron rod over a stone. They placed an iron pin over the stone.

January 17, 1972. McCombs Knutson Associates (Dickman Knutson, county surveyor) found the iron pin set by the State Highway Department and took reference ties.

November 15, 1973. Knutson replaced the iron pin with a McLeod County cast iron monument.

January 30, 1984. We found the monument and the reference ties good.

August 12, 1988. We found the monument in good condition.

May 4, 1990. We found the monument in good condition and took new reference ties.

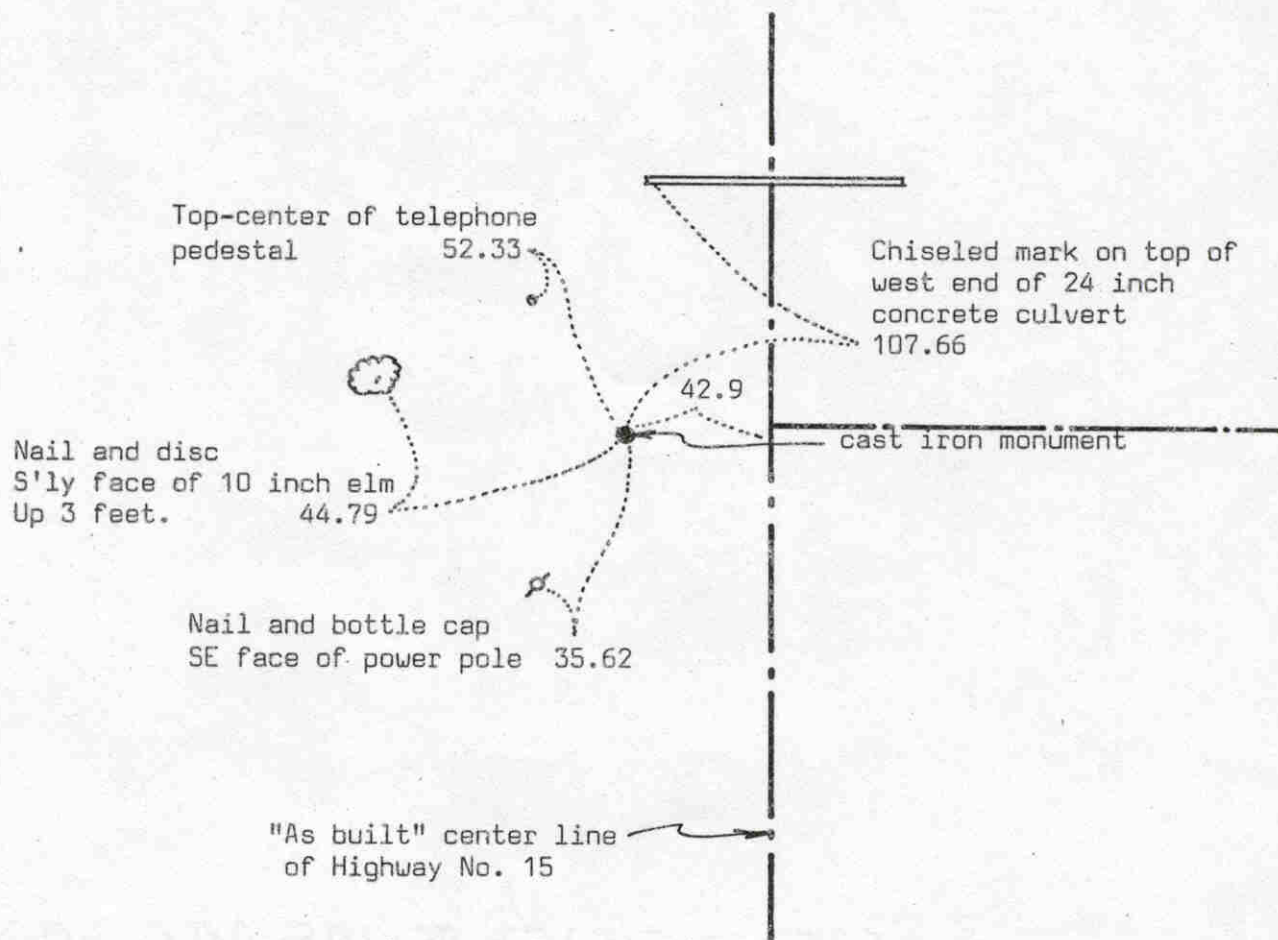
We accept the stone found by Madson and later the iron pin set by MNDOT and the cast iron monument set by Knutson as having perpetuated the correct location of the section corner.

NORTH QUARTER corner, Section 7, Township 117 North, Range 29 West

Certificate of Location of Government Corner

SKETCH OF REFERENCE TIES (NO SCALE)

SECTION 6



SECTION 7

Statement of evidence relative to this corner location on sheet 2

I hereby certify that this document was prepared by me or under my direct supervision.

Willard Pellinen

Willard Pellinen
McLeod County Surveyor
License No. 9626

Date 6/9/90

OFFICE OF THE COUNTY RECORDER
MCLEOD COUNTY, MINNESOTA.

I hereby certify that this document was filed in this office at 2 o'clock P. M. on the 21st day of June, 19 90.

Carmen Ostlie, County Recorder

By Jan Petrick, Deputy

Document No. 234010

Certificate of Location of Government Corner

This corner was established in 1856 by A.H.Runyon of the General Land Office.

Old county surveyor book shows an iron pipe at the corner and a distance of 2612.8 feet to the northeast corner of Section 7.

June 28, 1967. McCombs Knutson Associates (Dickman Knutson, county surveyor) found a $1\frac{1}{2}$ inch diameter iron pipe at the corner, 42.9 feet from the center line of State Highway No. 15 as per the right of way map. They replaced the iron pipe with a McLeod County cast iron monument and took reference ties.

August 5, 1988. We measured the north line of Section 7 and had a distance of 2613.65 feet to the northeast corner compared with the old distance of 2612.8 feet.

April 7, 1989. We found the monument in good condition and took new reference ties.

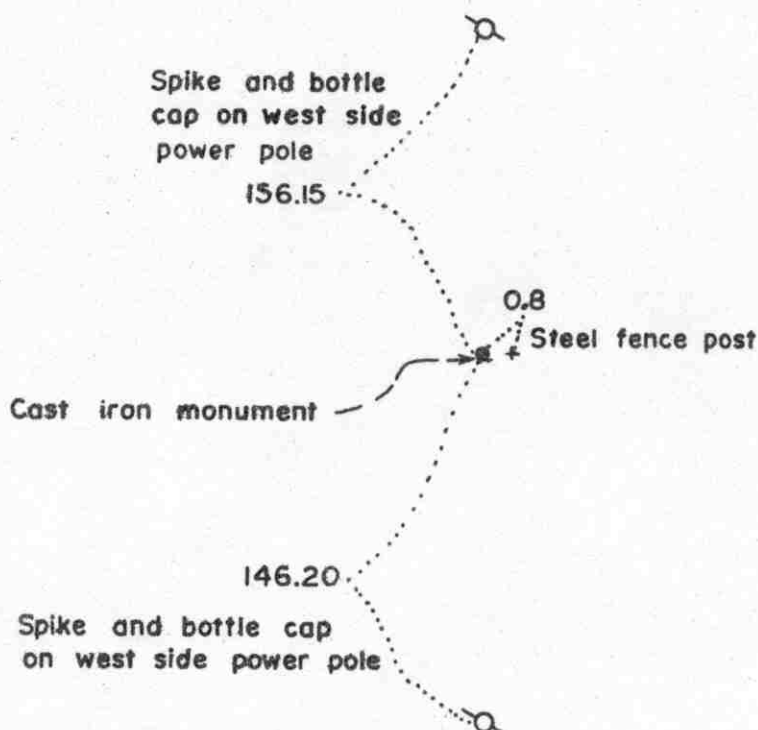
Northeast corner, Section 12, Township 117 North, Range 30 West

Certificate of Location of Government Corner



SKETCH OF REFERENCE TIES

(NO SCALE)

Statement of evidence relative to this corner location on sheet 2

I hereby certify that this document
was prepared by me or under my
direct supervision.

Willard Pellinen

Willard Pellinen
McLeod County Surveyor
License No. 9626

Date 2/5/89

OFFICE OF THE COUNTY RECORDER
MCLEOD COUNTY, MINNESOTA.

I hereby certify that this document was filed in this
office at 3 o'clock P.M. on the 9th day
of Feb, 1989.

Carmen Costie, County Recorder

By _____, Deputy

Document No. 226889

NORTHEAST corner, Section 12, Township 117 North, Range 30 West

Certificate of Location of Government Corner

This corner was established by the Government in 1855 and was monumented by a wood post and referenced to 4 bearing trees.

In December, 1968, we found a 2 inch diam. iron pipe with a wood post beside it. This iron pipe was in line with a power pole line running north and south. All the land around this corner belongs to one owner so there was no other occupation line except the power poles. We took reference ties to the iron pipe.

We replace the iron pipe with a McLeod County cast iron monument.

We don't know who set this iron pipe and wood post, but there being no evidence to the contrary, we will accept it as the northeast corner of Section 12.

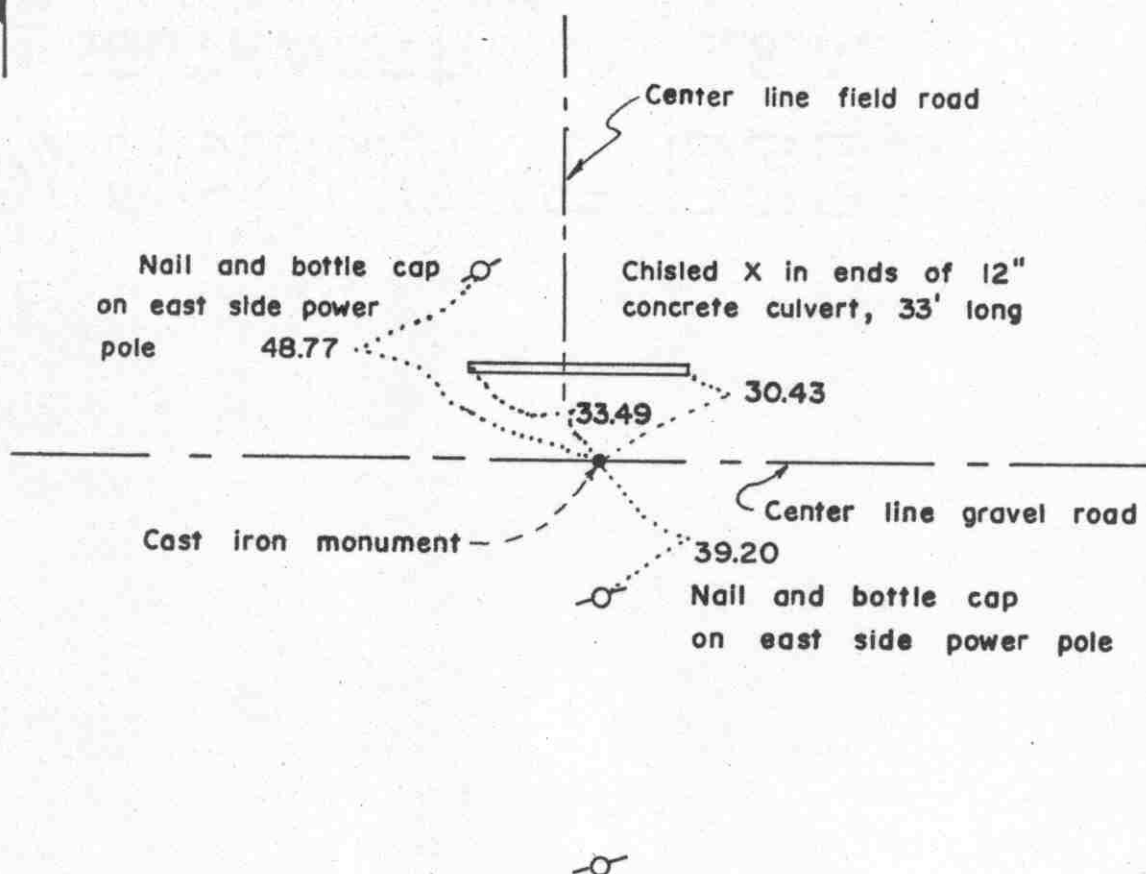
East Quarter corner, Section 12, Township 117 North, Range 30 West

Certificate of Location of Government Corner



SKETCH OF REFERENCE TIES

(NO SCALE)



Statement of evidence relative to this corner location on sheet 2

I hereby certify that this document was prepared by me or under my direct supervision.

Willard Pellinen

Willard Pellinen
McLeod County Surveyor
License No. 9626

Date 2/6/89

OFFICE OF THE COUNTY RECORDER
MCLEOD COUNTY, MINNESOTA.

I hereby certify that this document was filed in this office at 3 o'clock P.M. on the 9th day of Feb, 19 89.

Carmen Dotlie, County Recorder
By _____, Deputy

Document No. 226890

EAST QUARTER corner, Section 12, Township 117 North, Range 30 West

Certificate of Location of Government Corner

This corner was established by John Ryan of the Government Land Office in 1855 and was monumented by wood post and referenced to 2 bearing trees.

In Feruary, 1955, Fred Koenig surveyed in the South-east Quarter of Section 12 and he had an iron monument at the east quarter corner. His notes don't show what type of monument was found.

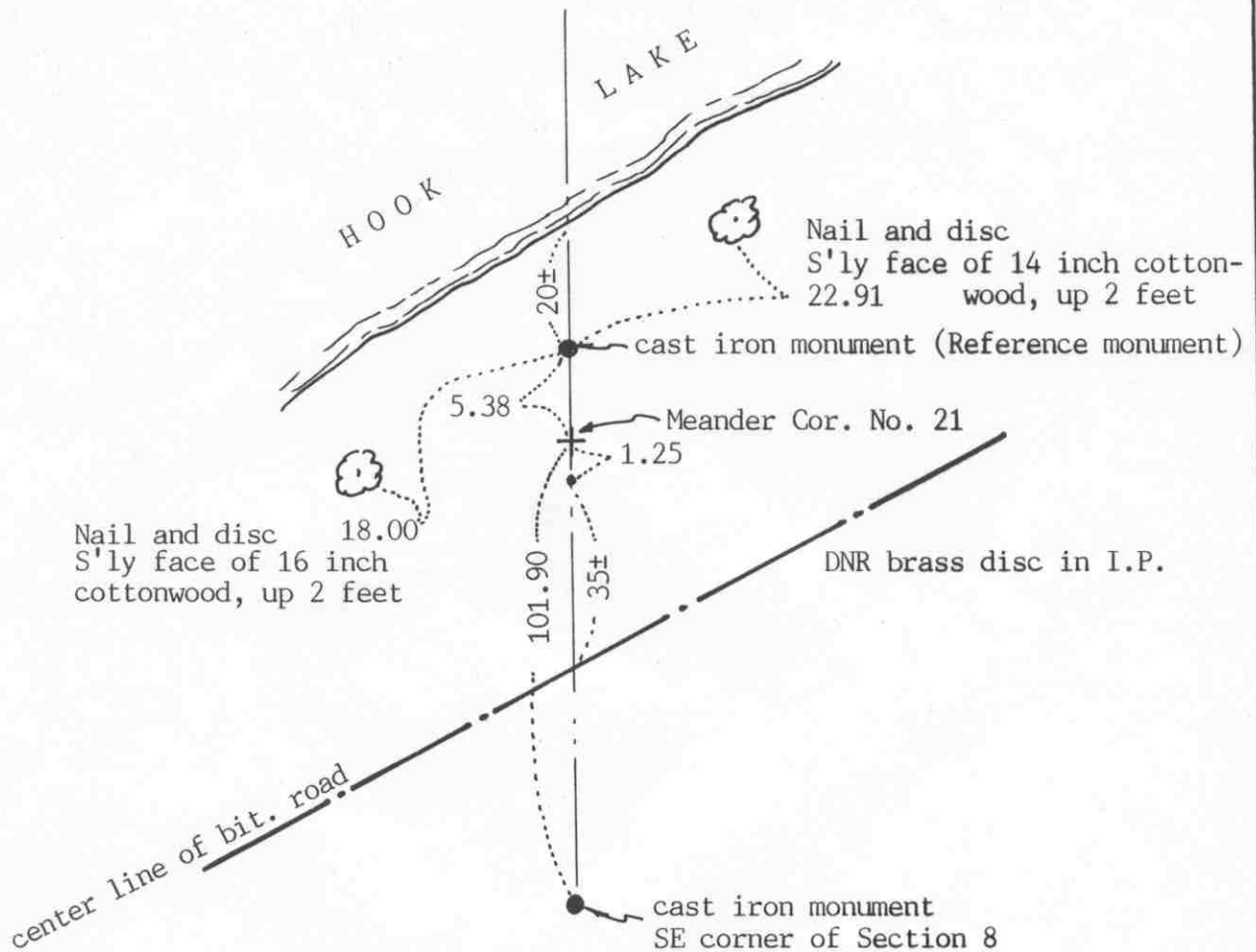
In December, 1968, we found an iron rod at this corner. We measured 2609.06 feet to the southeast corner of Section 12, compared with a distance of 2608.5 by Koenig in 1955.

We accepted the found iron rod as the true corner and replaced it with a McLeod County cast iron monument.

MEANDER COR. No. 21 corner, Section 8, Township 117 North, Range 29 West

Certificate of Location of Government Corner

SKETCH OF REFERENCE TIES (NO SCALE)



Statement of evidence relative to this corner location on sheet 2

I hereby certify that this document was prepared by me or under my direct supervision.

Willard Pellinen

Willard Pellinen
McLeod County Surveyor
License No. 9626

Date June 15, 1991

OFFICE OF THE COUNTY RECORDER MCLEOD COUNTY, MINNESOTA.

I hereby certify that this document was filed in this office at 9 o'clock A.M. on the 20th day of June, 19 91.

Carmen Osthe, County Recorder

By Shyllis Jyskowiak, Deputy

Document No. 239533

Certificate of Location of Government Corner

May, 1856. A.H.Runyon of the General Land Office set a post and marked 2 elms for bearing trees.

June 24, 1987. The Minnesota Department of Natural Resources set a McLeod County cast iron monument as a reference monument to the meander corner. The monument was set 5.38 feet north of the computed location of the meander corner. The computed location of the meander corner is on a proration of government distances to the east quarter corner and the southeast corner of Section 8.

May 30, 1990. We found the monument in good condition and we checked the reference ties.

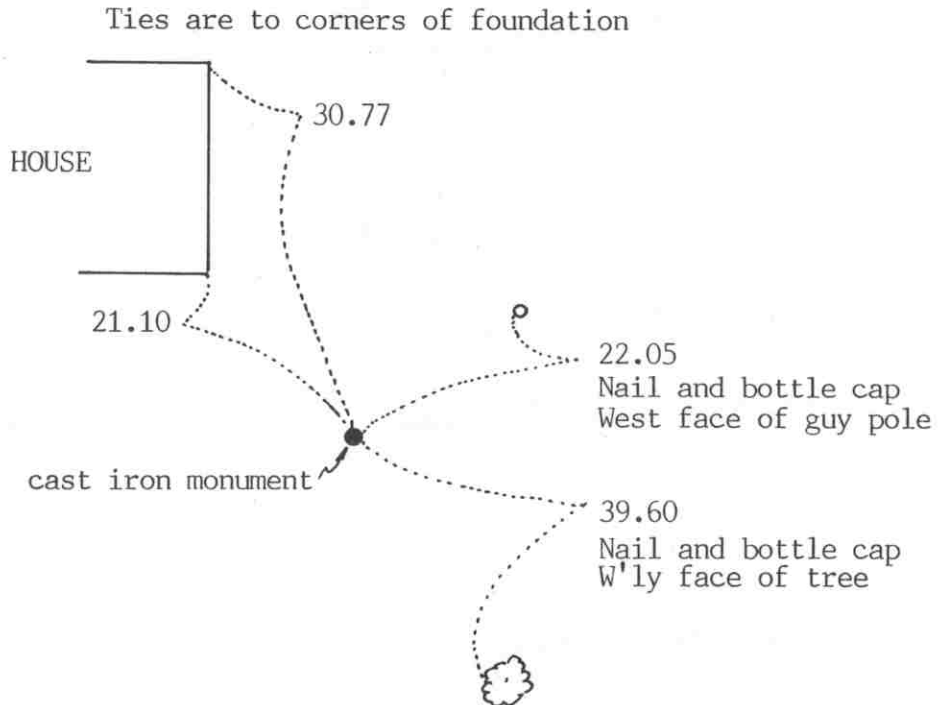
We agree on the DNR distance to the meander corner from the southeast corner of the Section. The government distance to the southeast corner is 1.54 chains (101.64 feet) and 38.46 chains to the east quarter corner (2538.36 feet). Our distance to the southeast corner is 101.90 feet and to the east quarter corner, 2544.88 feet.

EAST QUARTER corner, Section 8, Township 117 North, Range 29 West

Certificate of Location of Government Corner

SKETCH OF REFERENCE TIES

(NO SCALE)



Statement of evidence relative to this corner location on sheet 2

I hereby certify that this document
was prepared by me or under my
direct supervision.

Willard Pellinen

Willard Pellinen
McLeod County Surveyor
License No. 9626

Date April 14, 1991

OFFICE OF THE COUNTY RECORDER MCLEOD COUNTY, MINNESOTA.

I hereby certify that this document was filed in this
office at 9 o'clock A.M. on the 19th day
of April, 1991.

Carmen Potlie, County Recorder

By _____, Deputy

Document No. 238412

EAST QUARTER corner, Section 8, Township 117 North, Range 29 West***Certificate of Location of Government Corner***

May, 1856. A.H.Runyon of the General Land Office set a post and marked two trees for bearing trees.

September, 1964. Roy Hansen, land surveyor, in platting Luedtke's North Shore, found an iron pipe 2649 feet south of the northeast corner of Section 8. He didn't call the iron pipe the quarter corner but he used it for the north-south line.

October 14, 1975. McCombs Knutson Associates (Dickman Knutson, county surveyor) found the iron pipe. It checked ok with the plat.

October 15, 1975. Knutson replaced the iron pipe with a McLeod County cast iron monument and took reference ties.

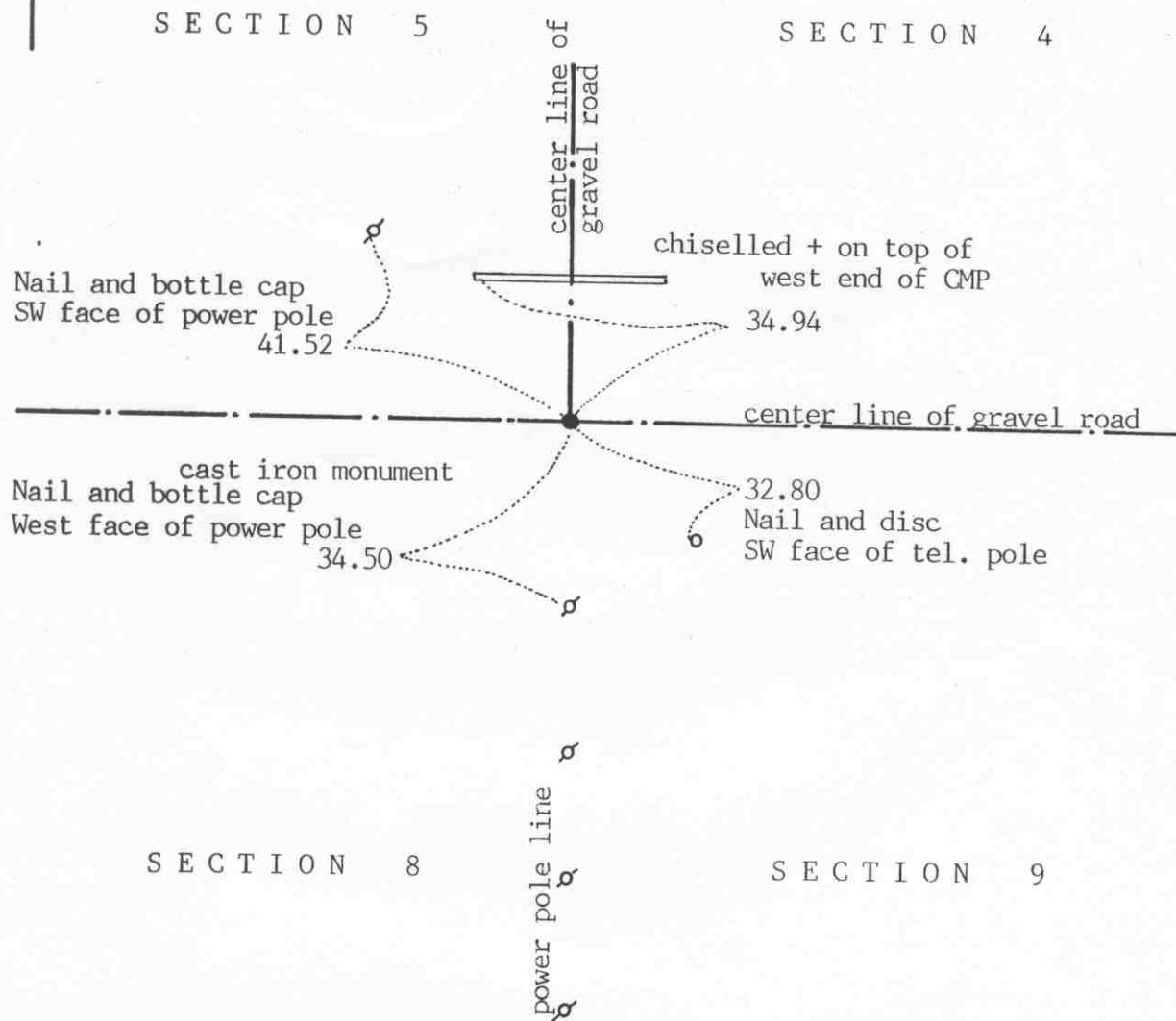
January 31, 1984. We found the monument in good condition and we measured the east line of the section. We had a distance of 2648.52 feet to the northeast corner of Section 8 and a distance of 2646.78 feet to the computed southeast corner of Section 8 which falls in the lake. The monument was about 9 feet west of a straight line between the section corners.

May 4, 1990. We found the monument and the reference ties ok.

We accept the iron pipe found by Hansen and Knutson as having perpetuated the correct location of the quarter corner.

NORTHEAST corner, Section 8, Township 117 North, Range 29 West

Certificate of Location of Government Corner

SKETCH OF REFERENCE TIES
(NO SCALE)Statement of evidence relative to this corner location on sheet 2

I hereby certify that this document
was prepared by me or under my
direct supervision.

Willard Pellinen
Willard Pellinen
McLeod County Surveyor
License No. 9626

Date February 13, 1991

OFFICE OF THE COUNTY RECORDER
MCLEOD COUNTY, MINNESOTA.

I hereby certify that this document was filed in this
office at 9 o'clock A.M. on the 20th day
of Feb, 1991.

Armen Oblic, County Recorder
By _____, Deputy

Document No. 237622

Northeast corner, Section 8, Township 117 North, Range 29 West

Certificate of Location of Government Corner

This corner was originally set by the government in May, 1856. A.H.Runyon set a post and marked 3 walnut trees and an ironwood for bearing trees

April 25, 1920. Old survey notes show an iron pipe at the corner.

November 18, 1925. Carlisle Madson, Sr., county surveyor, set a standard brass monument at the corner.

January 2, 1975. McCombs Knutson Associates (Dickman Knutson, county surveyor) found a spike at the corner below the surface of the gravel road.

June 5, 1975. Knutson dug for the corner, John Tupa from Hutchinson with a backhoe. Down 4 feet below the road surface they found a 15 inch by 10 inch stone, point up, with a rotted wood stake below the stone. They took reference ties.

October 14, 1975. Knutson set a McLeod County cast iron monument at the corner.

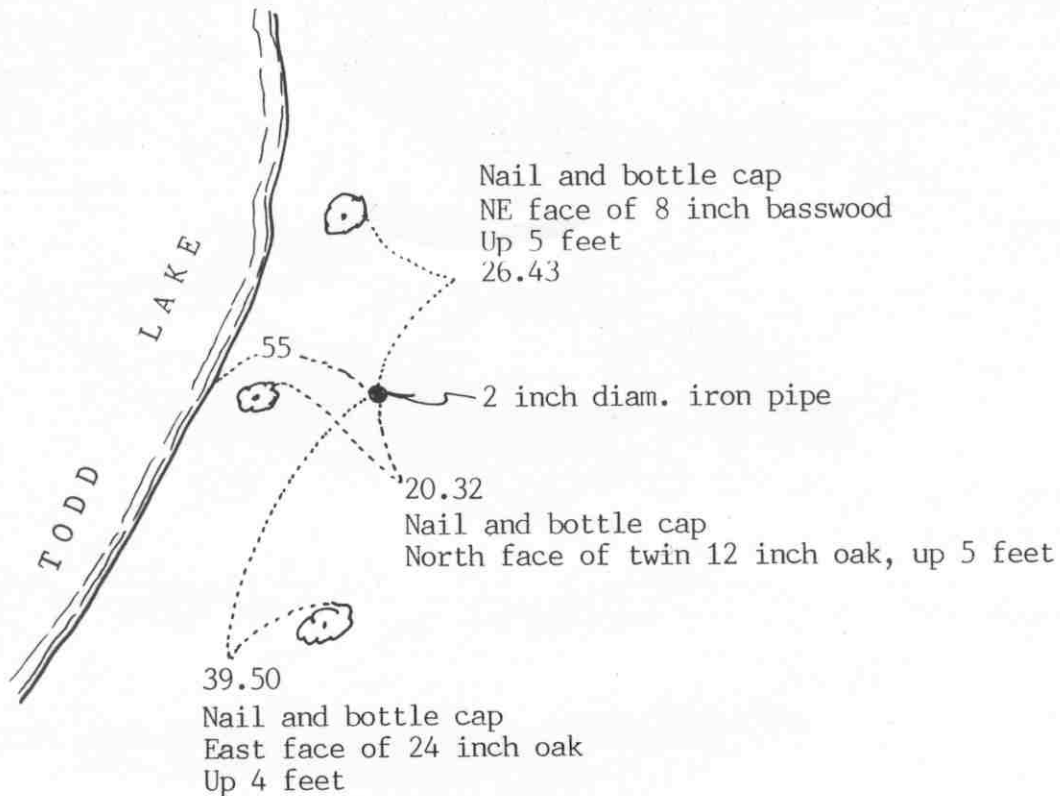
May 1, 1990. We found the monument in good condition and the reference ties good.

We accept the stone and stake found by Knutson as having perpetuated the correct location of the section corner. The monument set by Madson has been destroyed by road construction.

M.C. NO. 34 corner, Section 8, Township 117 North, Range 29 West

Certificate of Location of Government Corner

SKETCH OF REFERENCE TIES (NO SCALE)

Meander corner along north side of NE $\frac{1}{4}$ of Sec. 8

Statement of evidence relative to this corner location on sheet 2

I hereby certify that this document was prepared by me or under my direct supervision.

Willard Pellinen

Willard Pellinen
McLeod County Surveyor
License No. 9626

Date April 15, 1991

OFFICE OF THE COUNTY RECORDER MCLEOD COUNTY, MINNESOTA.

I hereby certify that this document was filed in this office at 9 o'clock A.M. on the 19th day of April, 1991.

Carmen Ostlie, County Recorder

By _____, Deputy

Document No. 238413

M.C.NO. 34 corner, Section 8, Township 117 North, Range 29 West

Certificate of Location of Government Corner

Meander corner No. 34, between sections 8 and 5 on the east side of Todd Lake.

May, 1856. A.H.Runyon of the General Land Office set a post and marked a walnut and a linden tree for bearing trees.

August 12, 1925. Carlisle Madson, Sr., county surveyor, found an iron bar which he claims he knows to be the meander corner. He put in an iron pipe with a standard brass monument on top. His distance to the northeast corner of Section 8 was approximately 100 feet shorter than shown on the government plat.

April 11, 1975. McCombs Knutson Associates (Dickman Knutson, county surveyor) found the iron pipe, brass top gone, and took available reference ties. They measured the same distance to the northeast corner of Section 8 as Madson did in 1925.

May 4, 1990. We found the iron pipe and took new reference ties.

North quarter corner, Section 8, Township 117 North, Range 29 West

Certificate of Location of Government Corner

SKETCH OF REFERENCE TIES
(NO SCALE)

SECTION 5

Nail and bottle cap
SW face of power pole 42.15

cast iron monument

center line of gravel road

Punch hole on top of
east end of CMP76.67
Nail and bottle cap
West face of power pole

148.85

114.06

Ties are to house
foundation corners

SECTION 8

Statement of evidence relative to this corner location on sheet 2I hereby certify that this document
was prepared by me or under my
direct supervision.Willard PellinenWillard Pellinen
McLeod County Surveyor
License No. 9626Date February 12, 1991OFFICE OF THE COUNTY RECORDER
MCLEOD COUNTY, MINNESOTA.I hereby certify that this document was filed in this
office at 9 o'clock A.M. on the 20th day
of Feb, 1991.Carmen O'Brien, County Recorder

By _____, Deputy

Document No. 237623

North quarter corner, Section 8, Township 117 North, Range 29 West

Certificate of Location of Government Corner

May, 1856. A.H.Runyon established this corner. He set a post and marked a walnut tree and an elm for bearing trees.

November 18, 1925. Carlisle Madson, Sr., county surveyor, located the corner from testimony of Wm. Francis, Dewing and other old settlers who had seen the original stake in place.

August 19, 1927. Madson set a standard brass monument. He set it in ashes with a pile of stones on top of the monument. Monument was set $2\frac{1}{2}$ feet below the road surface.

March 6, 1974. McCombs Knutson Associates (Dickman Knutson, county surveyor) found the standard brass monument $2\frac{1}{2}$ feet below the road surface under stones. Knutson set a McLeod County cast iron monument over the brass monument and took reference ties.

January 1, 1984. We found the monument in good condition and measured to the northwest corner of Section 8. We had a distance of 2670.85 compared with 2671.5 feet by Madson in 1925.

We accept the monument set by Madson and later the monument set by Knutson as having perpetuated the correct location of the quarter corner.

May 1, 1990. We found the monument in good condition and checked the reference ties.

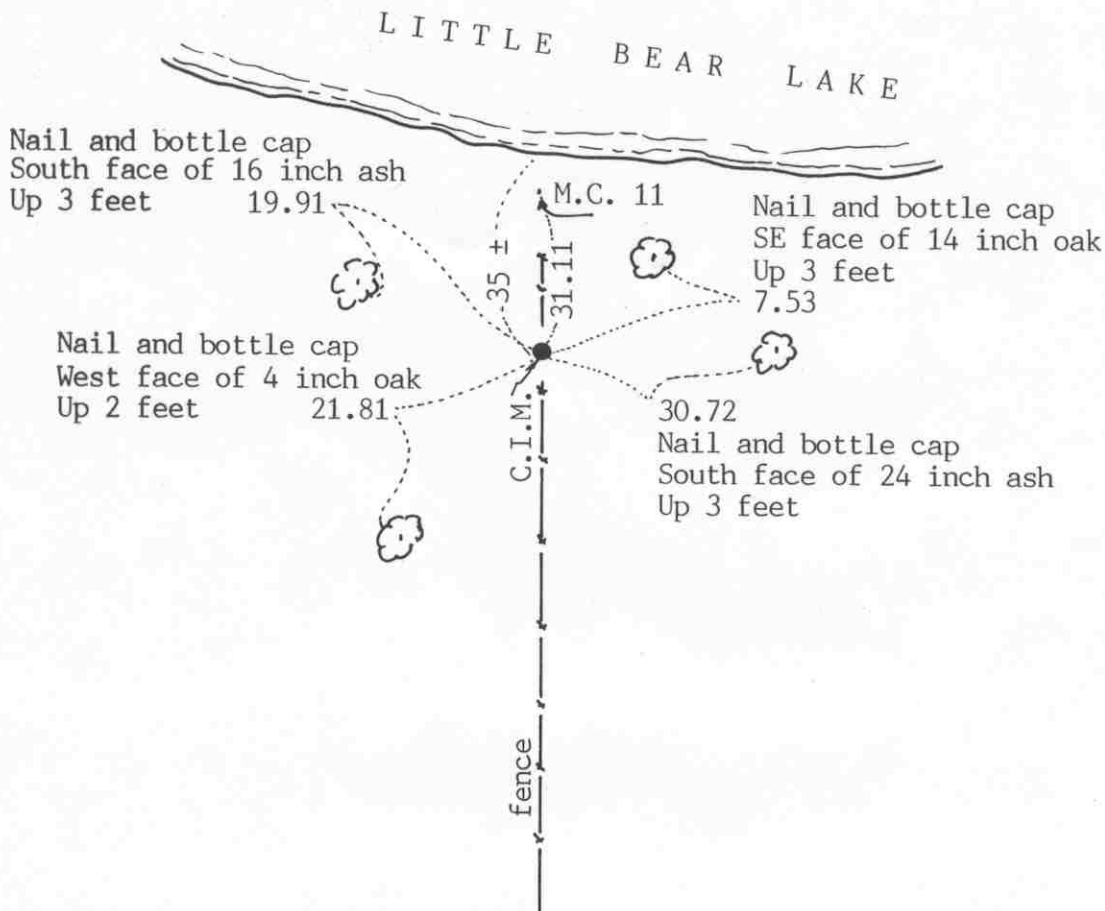
Certificate of Location of Government Corner

SKETCH OF REFERENCE TIES (NO SCALE)



SECTION 9

SECTION 10



Statement of evidence relative to this corner location on sheet 2

I hereby certify that this document was prepared by me or under my direct supervision.

Willard Pellinen

Willard Pellinen
McLeod County Surveyor
License No. 9626

Date May 15, 1991

OFFICE OF THE COUNTY RECORDER
MCLEOD COUNTY, MINNESOTA.

I hereby certify that this document was filed in this office at 9 o'clock A.M. on the 22nd day of May, 19 91.

Carmin Ostlie, County Recorder

By _____, Deputy

Document No. 239009

Witness _____ corner, Section 9, Township 117 North, Range 29 West

Certificate of Location of Government Corner

Witness corner to meander corner No. 11 along east line of Section 9, south of Little Bear Lake. Computed meander corner is 31.11 feet north of this corner.

October 31, 1975. McCombs Knutson Associates (Dickman Knutson county surveyor) set a cast iron monument along the north-south fence line which has been accepted as the section line by adjacent property owners.

May 16, 1990. We found the monument in good condition and took new reference ties.

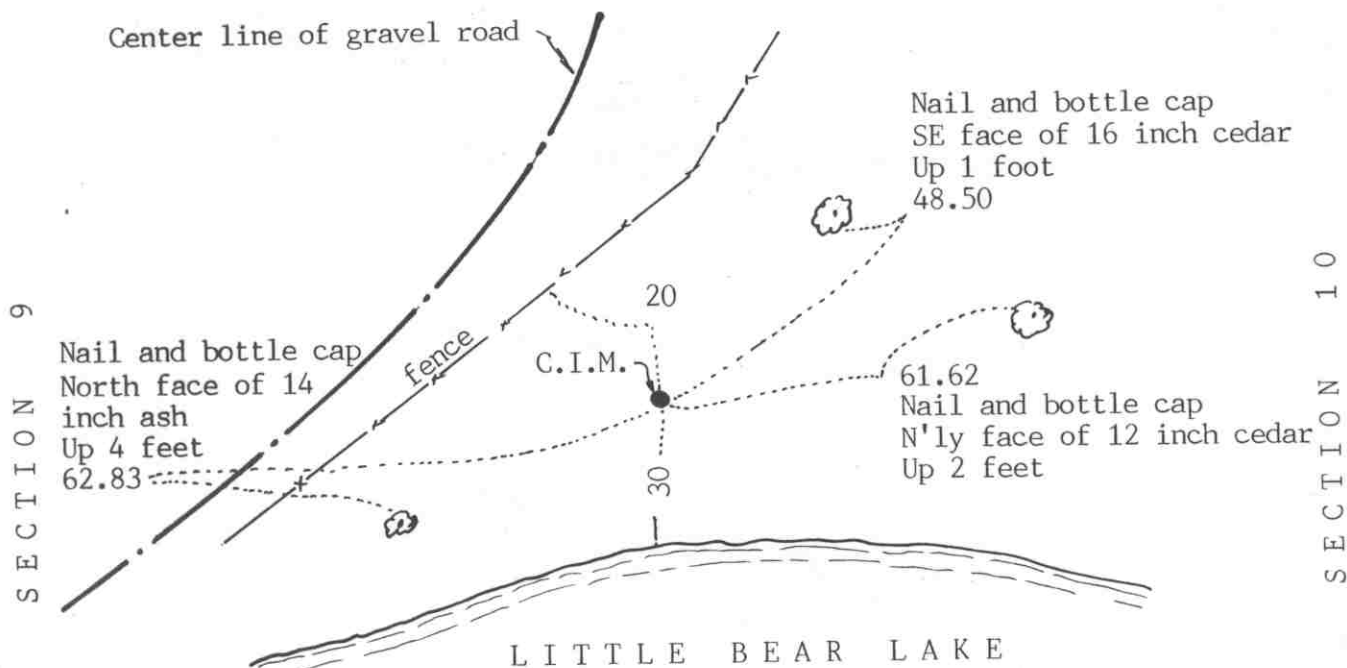
MEANDER COR 12 corner, Section 9, Township 117 North, Range 29 West

Certificate of Location of Government Corner

SKETCH OF REFERENCE TIES

(NO SCALE)

Along east line of Section 9
South of Northeast corner of Sec 9



Statement of evidence relative to this corner location on sheet 2

I hereby certify that this document
was prepared by me or under my
direct supervision.

Willard Pellinen

Willard Pellinen
McLeod County Surveyor
License No. 9626

Date April 14, 1991

OFFICE OF THE COUNTY RECORDER
MCLEOD COUNTY, MINNESOTA.

I hereby certify that this document was filed in this
office at 9 o'clock A.M. on the 19th day
of April, 1991.

Carmen O'Brien, County Recorder

By _____, Deputy

Document No. 238415

M.Cor No. 12 corner, Section 9, Township 117 North, Range 29 West

Certificate of Location of Government Corner

May, 1856. A.H.Runyon of the General Land Office set a post at meander corner No. 9 and marked 2 oaks for bearing trees.

September 9, 1983. We measured the east line of Section 9 and set the meander corner on a government proration of the distances along the east line of Section 9. We measured 1525.12 feet to the northeast corner of the section and 3745.28 feet to the southeast corner compared with government distances of 1527.90 and 3752.10 feet. The corner was set on a straight line between the northeast corner and the computed location of the meander corner south of the lake. On the south side of the lake is a long standing fence which the land owners say has been in the same location as long as they can remember.

NORTHEAST corner, Section 9, Township 117 North, Range 29 West

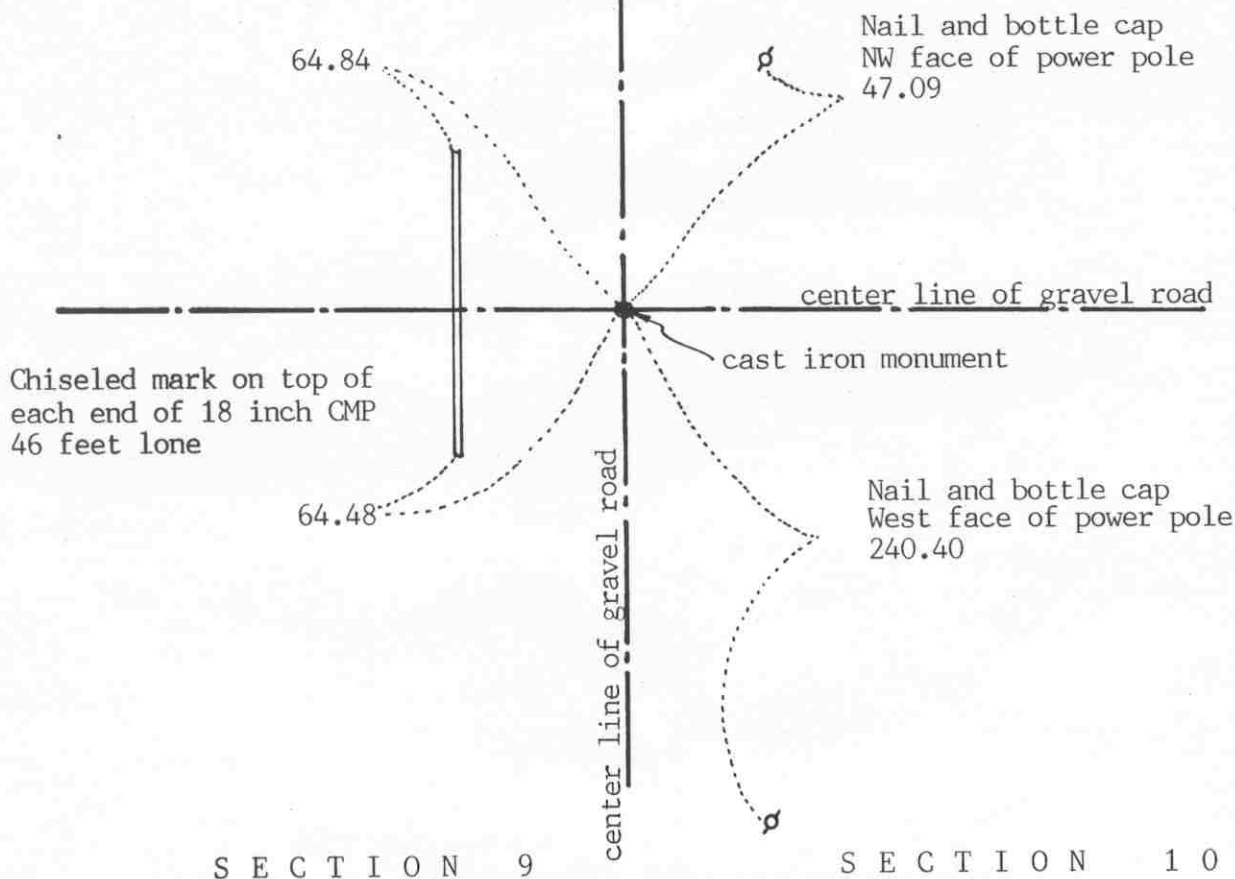
Certificate of Location of Government Corner

SKETCH OF REFERENCE TIES
(NO SCALE)



SECTION 4

SECTION 3



Statement of evidence relative to this corner location on sheet 2

I hereby certify that this document
was prepared by me or under my
direct supervision.

Willard Pellinen

Willard Pellinen
McLeod County Surveyor
License No. 9626

Date April 15, 1991

OFFICE OF THE COUNTY RECORDER
MCLEOD COUNTY, MINNESOTA.

I hereby certify that this document was filed in this
office at 9 o'clock A.M. on the 19th day
of April, 1991.

Carmen Hotlie, County Recorder

By _____, Deputy

Document No. 238414

NORTHEAST

corner, Section 9, Township 117 North, Range 29 West

Certificate of Location of Government Corner

May, 1856. A.H.Runyon of the General Land Office set a post at the corner and marked 4 trees for bearing trees.

1914. Lew Merrill, land surveyor, found an iron stake at the corner.

1930. The county highway department's field notes show a stone at the corner.

April 6, 1973. McCombs Knutson Associates (Dickman Knutson, county surveyor) dug for the corner and found a stone and a rotted wood stake down $1\frac{1}{2}$ feet below the road surface in the old road bed. They also found an iron stake beside the stone. Iron was 1 inch square and 1 foot long. They set a McLeod County cast iron monument and took available ties. The corner was within 0.6 foot of the 1914 distance by Lew Merrill to the northeast corner of Section 4.

May 4, 1990. We found the monument in good condition and took new reference ties.

We believe the iron and stone found by Knutson was the same iron found by Merrill in 1914 and the same stone found or set by the highway department in 1930, and that they have perpetuated the correct location of the section corner.

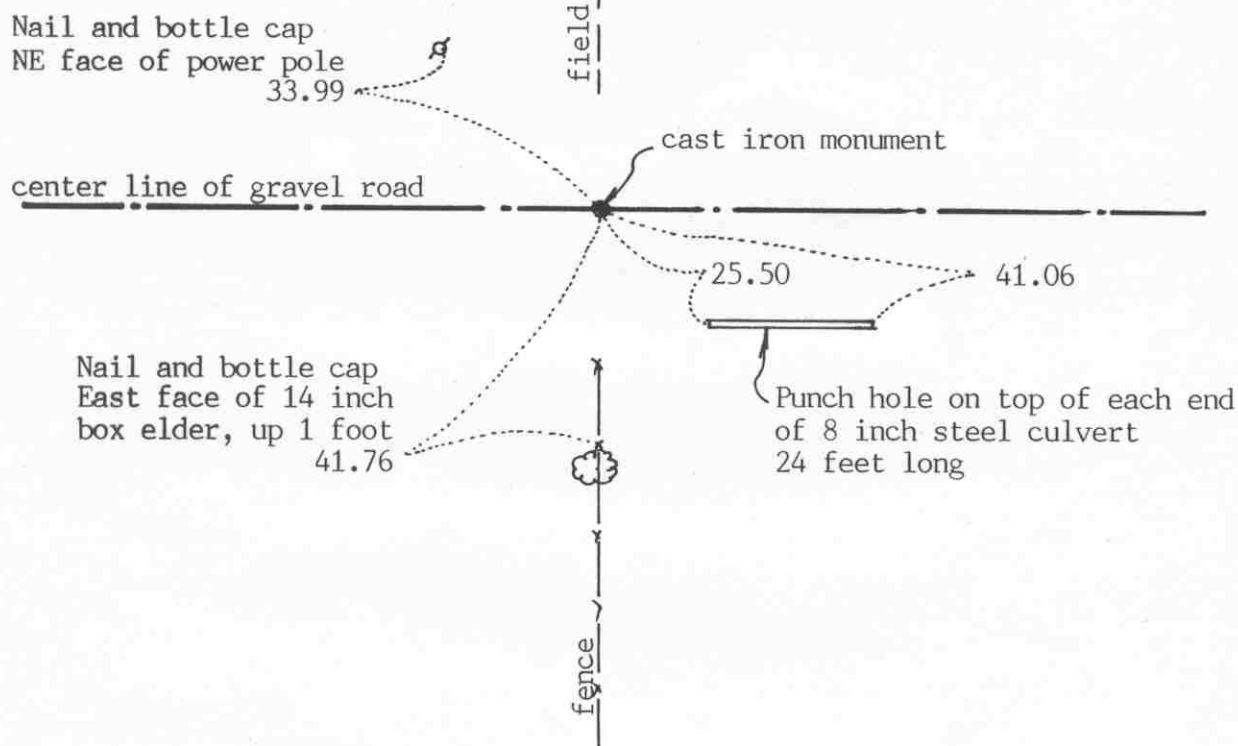
NORTH QUARTER corner, Section 9, Township 117 North, Range 29 West

Certificate of Location of Government Corner

SKETCH OF REFERENCE TIES

(NO SCALE)

SECTION 4



SECTION 9

Statement of evidence relative to this corner location on sheet 2

I hereby certify that this document
was prepared by me or under my
direct supervision.

Willard Pellinen

Willard Pellinen
McLeod County Surveyor
License No. 9626

Date April 15, 1991

OFFICE OF THE COUNTY RECORDER
MCLEOD COUNTY, MINNESOTA.

I hereby certify that this document was filed in this
office at 9 o'clock A.M. on the 19th day
of April, 1991.

Carmin Hollier, County Recorder

By _____, Deputy

Document No. 238416

NORTH QUARTER corner, Section 9, Township 117 North, Range 29 West

Certificate of Location of Government Corner

May, 1856. A.H.Runyon of the General Land Office set a post and marked an elm and an ironwood for bearing trees.

1914. Field notes by Lew Merrill, land surveyor, show he found a gun barrel at the corner. This was in line with a fence to the north.

January 2, 1975. McCombs Knutson Associates (Dickman Knutson, county surveyor) chained the north line of Section 9 and set a temporary quarter corner on the center line of the east-west road in line with fences north and south.

June 5, 1975. Knutson dug for the corner, John Tupa from Hutchinson with a backhoe. They dug a hole feet wide by 15 feet long by 4 feet deep but found nothing.

July 22, 1975. Knutson set a McLeod County cast iron monument at the center line of the road in line with the fences north and south. Adjoining land owners say the fences are in the same location as they were in 1914 when Merrill surveyed in Section 4.

May 4, 1990. We found the cast iron monument in good condition and took new reference ties.

We accept the corner as set by Knutson as marking the quarter corner. The long standing fence lines and the center of the road have perpetuated the correct location.

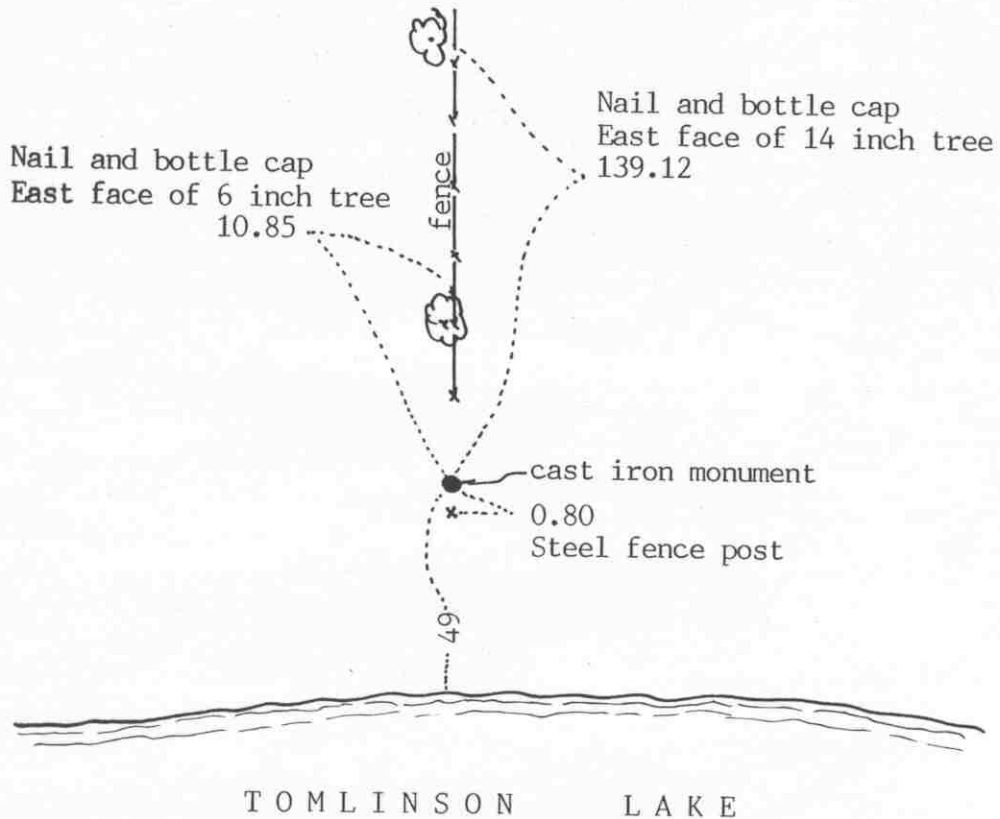
POINT ON LINE corner, Section 10, Township 117 North, Range 29 West

Certificate of Location of Government Corner

SKETCH OF REFERENCE TIES
(NO SCALE)

SECTION 10

SECTION 11



Statement of evidence relative to this corner location on sheet 2

I hereby certify that this document was prepared by me or under my direct supervision.

Willard Pellinen

Willard Pellinen
McLeod County Surveyor
License No. 9626

Date April 17, 1991

OFFICE OF THE COUNTY RECORDER
MCLEOD COUNTY, MINNESOTA.

I hereby certify that this document was filed in this office at 9 o'clock A.M. on the 22nd day of May, 19 91.

Armen Optie, County Recorder

By _____, Deputy

Document No. 239010

Point along east line
of SE $\frac{1}{4}$ of Sec. 10

Sheet 2 of 2 sheets

Point on line _____ corner, Section 10, Township 117 North, Range 29 West

Certificate of Location of Government Corner

September, 1975. McCombs Knutson Associates (Dickman Knutson, county surveyor) set a cast iron monument along the east line of the Southeast Quarter of Section 10. They set it along the north-south fence line which the adjoining property owners say is the section line. They found an iron pipe 33.00 feet west of the line between this monument and the northeast corner of Section 10 which was set in 1927 33.00 feet west of the line.

May 16, 1990. We found the monument in good condition and took new reference ties.

EAST QUARTER corner, Section 10, Township 117 North, Range 29 West

Certificate of Location of Government Corner

SKETCH OF REFERENCE TIES
(NO SCALE)

SECTION 10

SECTION 11

Nail and disc
SE face of tel pole
51.05PK nail
on top of fence post
28.57

cast iron monument

center line of bit. road

35.84
Nail and disc
SW face of power pole

Statement of evidence relative to this corner location on sheet 2

I hereby certify that this document
was prepared by me or under my
direct supervision.Willard Pellinen
Willard Pellinen
McLeod County Surveyor
License No. 9626Date April 14, 1991OFFICE OF THE COUNTY RECORDER
MCLEOD COUNTY, MINNESOTA.I hereby certify that this document was filed in this
office at 9 o'clock A.M. on the 19th day
of April, 1991.Carmin O'Brien, County Recorder

By _____, Deputy

Document No. 238417

EAST QUARTER corner, Section 10, Township 117 North, Range 29 West

Certificate of Location of Government Corner

May, 1856. A.H.Runyon of the General Land Office set a post and marked 1 aspen and 2 linden trees for bearing trees.

June 13, 1898. E.L.Higgins, county surveyor, found a stone at the corner.

June 11, 1903. E.L.Higgins again found the stone and used it in describing a parcel in the southeast quarter of Section 10.

January 31, 1940. The McLeod County Highway Department set an iron pin at an assumed location for the corner. They measured 2645.4 feet to an assumed corner at the northeast corner of Section 10.

January 5, 1975. McCombs Knutson Associates (Dickman Knutson, county surveyor) found a spike at the corner and took reference ties. This was on the center line of the north-south road in line with a fence to the east.

June 5, 1975. Knutson dug for the corner, John Tupa from Hutchinson with a backhoe. They dug a hole 4 feet by 8 feet by 5 feet deep but found no monument or stone. Down at 5 feet down, they found a soft spot with black dirt as if a stone had been graded out. They took reference ties. This was within a tenth of a foot of the same location of the spike they found in January 1975.

July 22, 1975. Knutson set a McLeod County cast iron monument.

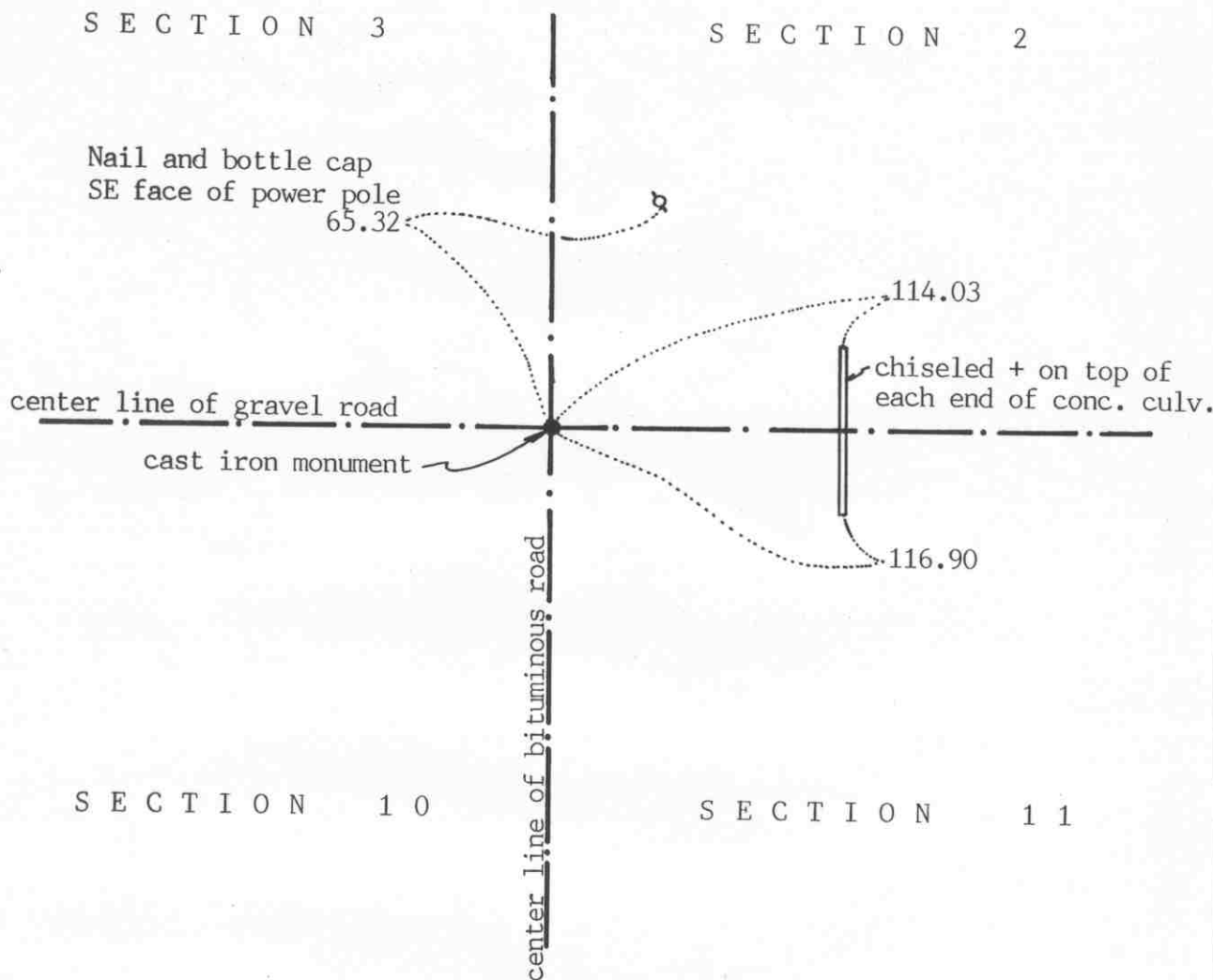
September 9, 1983. We found the monument in good condition and the reference ties good. We measured 2643.85 feet to the northeast corner of Section 10.

May 4, 1990. We found the monument in good condition and checked the reference ties.

NORTHEAST corner, Section 10, Township 117 North, Range 29 West

Certificate of Location of Government Corner

SKETCH OF REFERENCE TIES
(NO SCALE)



Statement of evidence relative to this corner location on sheet 2

I hereby certify that this document was prepared by me or under my direct supervision.

Willard Pellinen

Willard Pellinen
McLeod County Surveyor
License No. 9626

Date March 27, 1991

OFFICE OF THE COUNTY RECORDER
MCLEOD COUNTY, MINNESOTA.

I hereby certify that this document was filed in this office at 2 o'clock P.M. on the 1st day of April, 19 91.

Armen Ollie, County Recorder

By _____, Deputy

Document No. 238153

NORTHEAST

corner, Section 10, Township 117 North, Range 29 West

Certificate of Location of Government Corner

May, 1856. A.H.Runyon of the General Land Office set a post and marked 2 elms and 2 aspens for bearing trees.

November 15, 1973. Dickman Knutson set a McLeod County cast iron monument in place of an iron pin which has been used as the section corner by surveyors and by the county highway department. This iron pin was probably set by the county highway department.

May 4, 1990. We found the cast iron monument in good condition and checked the reference ties.

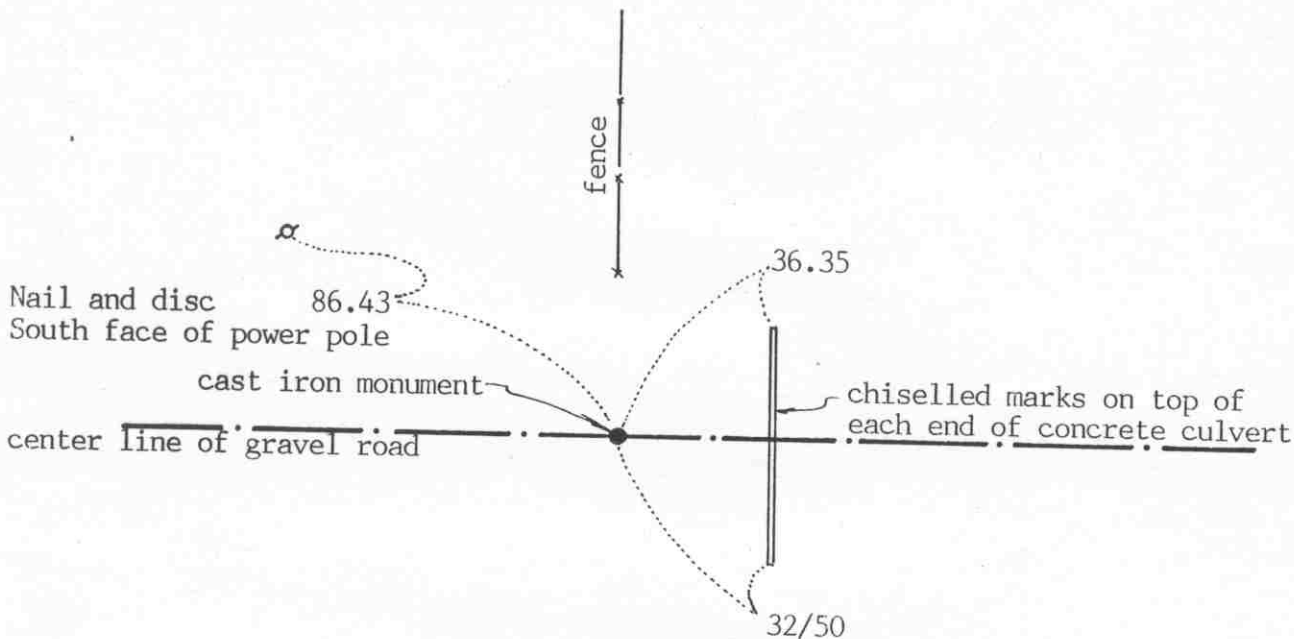
There being no evidence to the contrary, we accept the iron pin found by Knutson as having perpetuated the correct location of the section corner. This pin was on the center line intersection of the roads which has been accepted as the correct corner by the adjoining land owners.

North quarter corner, Section 10, Township 117 North, Range 29 West

Certificate of Location of Government Corner

SKETCH OF REFERENCE TIES
(NO SCALE)

SECTION 3



SECTION 10

Statement of evidence relative to this corner location on sheet 2

I hereby certify that this document was prepared by me or under my direct supervision.

Willard Pellinen

Willard Pellinen
McLeod County Surveyor
License No. 9626

Date February 12, 1991

OFFICE OF THE COUNTY RECORDER
MCLEOD COUNTY, MINNESOTA.

I hereby certify that this document was filed in this office at 9 o'clock A.M. on the 20th day of Feb, 1991.

Carmen Oetlie, County Recorder

By _____, Deputy

Document No. 237624

North quarter corner, Section 10, Township 117 North, Range 29 West

Certificate of Location of Government Corner

May, 1856. A.H.Runyon of the General Land Office set this corner. He set a post and marked 2 aspens for bearing trees.

June 13, 1898. E.L.Higgins, county surveyor, found a stake, said to be old corner.

April 6, 1973. McCombs Knutson Associates (Dickman Knutson, county surveyor) dug for the corner and found a small bolt and below the bolt a stone and a wood stake. Knutson set a McLeod County cast iron monument and took reference ties. This is in the center line of the east-west gravel road and in line with a fence to the north. A fence running south $\frac{1}{4}$ mile east is with $2\frac{1}{2}$ feet of being half way between this corner and the northeast corner of Section 10.

September 9, 1983. We found the monument in good condition and the reference ties good.

May 1, 1990. We again found the monument and the reference ties good.

We accept the stone and wood stake found by Knutson as having perpetuated the correct location of the quarter corner

EAST QUARTER corner, Section 11, Township 117 North, Range 29 West

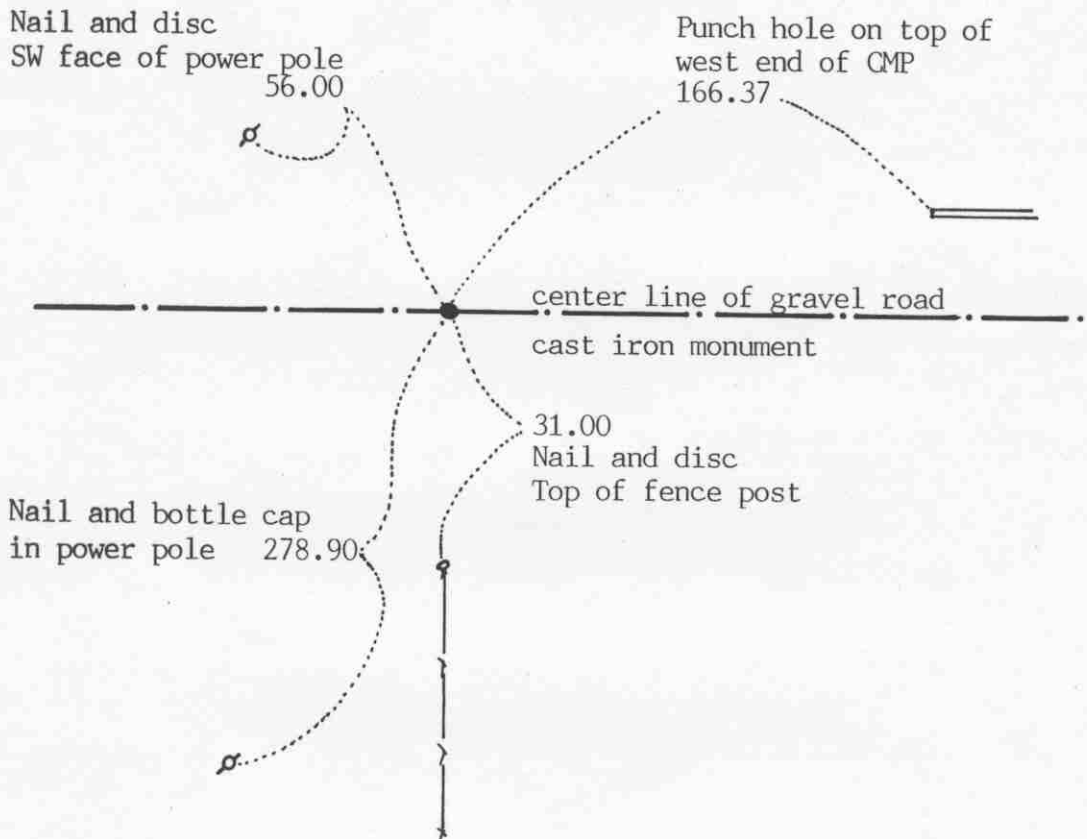


Certificate of Location of Government Corner

SKETCH OF REFERENCE TIES
(NO SCALE)

SECTION 11

SECTION 12



Statement of evidence relative to this corner location on sheet 2

I hereby certify that this document was prepared by me or under my direct supervision.

Willard Pellinen
Willard Pellinen
McLeod County Surveyor
License No. 9626

Date March 28, 1991

OFFICE OF THE COUNTY RECORDER
MCLEOD COUNTY, MINNESOTA.

I hereby certify that this document was filed in this office at 2 o'clock P.M. on the 1st day of April, 19 91.

Armen D. Stille, County Recorder

By _____, Deputy

Document No. 238155

Certificate of Location of Government Corner

May, 1856. A.H.Runyon of the General Land Office set a post in a marsh and marked an elm and an aspen for bearing trees.

January 7, 1975. We measured the east line of Section 11 and set a temporary quarter corner on the center line of the east-west road in line with a fence to the south.

June 5, 1975. We dug for the corner, John Tupa from Hutchinson with a backhoe. We found a stone, 6 inches in diameter down 1 foot below the road surface. We took reference ties and dug deeper. Down at 3 feet below the surface, we found a 3 inch diameter wood post, 3 feet long. This was directly below the found stone.

July 22, 1975. We set a McLeod County cast iron monument and took additional reference ties.

May 2, 1990. We found the cast iron monument in good condition and checked the reference ties.

We accept the stone and wood post we found as having perpetuated the correct location of the quarter corner.

NORTHEAST corner, Section 11, Township 117 North, Range 29 West

Certificate of Location of Government Corner

SKETCH OF REFERENCE TIES
(NO SCALE)



SECTION 2

SECTION 1

Chiseled + on top of
concrete culvert
128.52

Punch hole on top of CMP
129.00

Nail and disc
NE face of power pole
53.00

cast iron monument

52.60
Nail and bottle cap
South face of 30 inch tree

SECTION 11

SECTION 12

center line of gravel road

Statement of evidence relative to this corner location on sheet 2

I hereby certify that this document
was prepared by me or under my
direct supervision.

Willard Pellinen

Willard Pellinen
McLeod County Surveyor
License No. 9626

Date March 20, 1991

OFFICE OF THE COUNTY RECORDER
MCLEOD COUNTY, MINNESOTA.

I hereby certify that this document was filed in this
office at 2 o'clock P.M. on the 1st day
of April, 1991.

Carmen O'Brien, County Recorder

By _____, Deputy

Document No. 238154

NORTHEAST corner, Section 11, Township 117 North, Range 29 West***Certificate of Location of Government Corner***

May, 1856. A.H.Runyon of the General Land Office set a post and marked 3 oaks and one aspen for bearing trees.

March 27, 1973. McCombs Knutson Associates (Dickman Knutson, county surveyor) found a spike and bottle cap on the center line of the north-south road, in line with a fence to the east and the easterly extension of the road from the west. They took reference ties.

July 13, 1973. Knutson dug for the corner, John Tupa from Hutchinson with a backhoe. Down 2 feet below the road surface they found a 5 inch by 8 inch stone. This was within a half a foot of being directly below the spike they found earlier. Down 4 feet below the road surface they found a 12 inch diameter stone and a rotted wood stake. This was directly below the first stone.

August 21, 1973. Knutson set a McLeod County cast iron monument and took additional reference ties.

May 2, 1990. We found the monument in good condition and checked the reference ties.

We accept the stones found by Knutson as having perpetuated the correct location of the section corner.

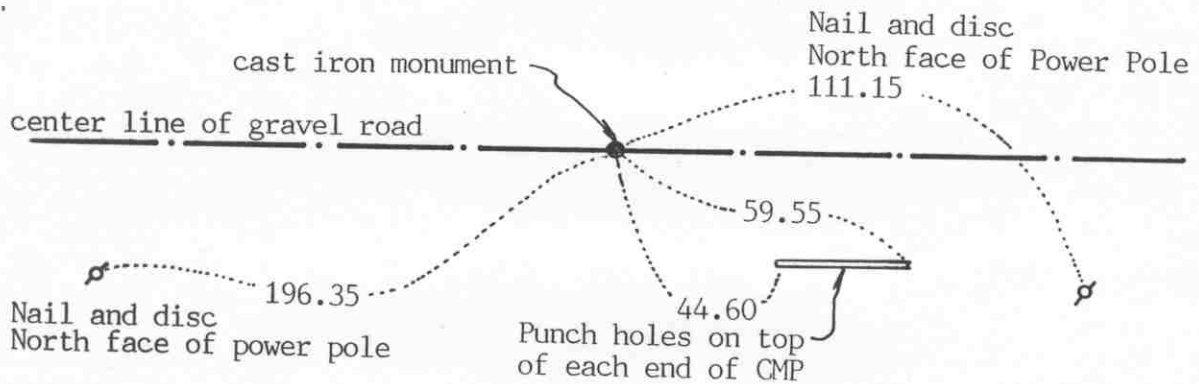
NORTH QUARTER corner, Section 11, Township 117 North, Range 29 West



Certificate of Location of Government Corner

SKETCH OF REFERENCE TIES
(NO SCALE)

SECTION 2



SECTION 11

Statement of evidence relative to this corner location on sheet 2

I hereby certify that this document was prepared by me or under my direct supervision.

Willard Pellinen

Willard Pellinen
McLeod County Surveyor
License No. 9626

Date March 27, 1991

OFFICE OF THE COUNTY RECORDER
MCLEOD COUNTY, MINNESOTA.

I hereby certify that this document was filed in this office at 2 o'clock P.M. on the 1st day of April, 1991.

Carmin Ottilie, County Recorder

By _____, Deputy

Document No. 238156

NORTH QUARTER corner, Section 11, Township 117 North, Range 29 West

Certificate of Location of Government Corner

May, 1856. A.H.Runyon of the General Land Office set a post and marked an aspen and an elm for bearing trees.

March 27, 1973. McCombs Knutson Associates (Dickman Knutson, county surveyor) found a 1 inch diameter iron pine down 1 foot. They took available reference ties.

July 13, 1973. Knutson dug for the corner, John Tupa from Hutchinson with a backhoe. They dug a hole 5 feet by 8 feet by 5 feet deep but found nothing else.

November 15, 1973. Knutson set a McLeod County cast iron monument at the corner. This corner falls within 1 foot of being half way between the section corners.

May 2, 1990. We found the monument in good condition and checked the reference ties.

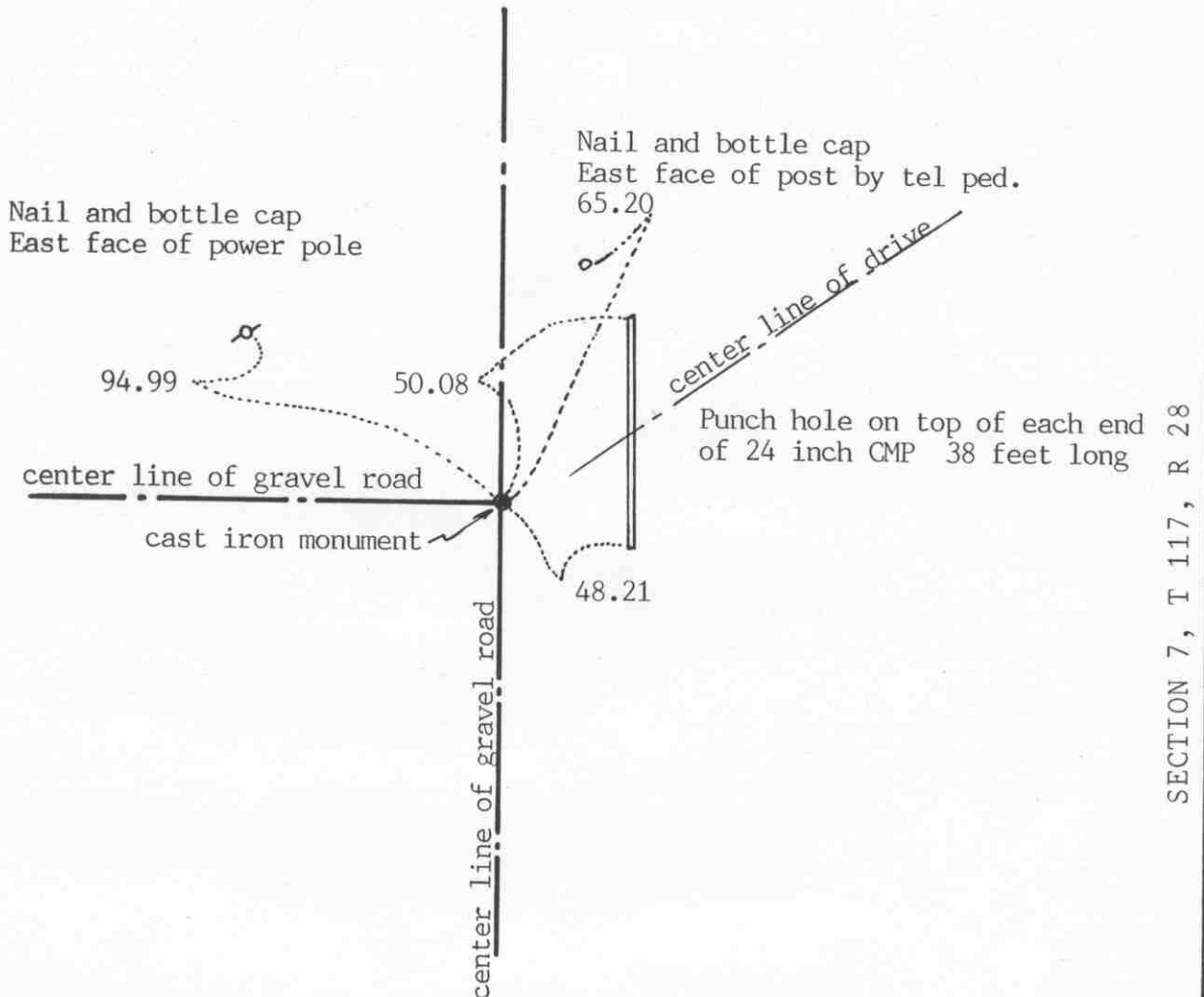
We accept the iron pin found found by Knutson as having perpetuated the correct location of the quarter corner.

EAST QUARTER corner, Section 12, Township 117 North, Range 29 West

Certificate of Location of Government Corner

SKETCH OF REFERENCE TIES

(NO SCALE)



Statement of evidence relative to this corner location on sheet 2

I hereby certify that this document was prepared by me or under my direct supervision.

Willard Pellinen

Willard Pellinen
McLeod County Surveyor
License No. 9626

Date March 9, 1991

OFFICE OF THE COUNTY RECORDER
MCLEOD COUNTY, MINNESOTA.

I hereby certify that this document was filed in this office at 2 o'clock P.M. on the 1st day of April, 19 91.

Carmen Ottilie, County Recorder

By _____, Deputy

Document No. 238158

EAST QUARTER corner, Section 12, Township 117 North, Range 29 West

Certificate of Location of Government Corner

August, 1855. John Ryan of the General Land Office set a post at the corner and marked an elm and an aspen for bearing trees.

September 19, 1969. McCombs Knutson Associates (Dickman Knutson, county surveyor) measured the east line of Section 12 and set a temporary quarter corner on the center line intersection of the roads. This falls within a few feet of being on a split between the section corners. Mr. Hlavka, 71 years old, lives in the Northwest Quarter of Section 7, said the corner should be at the center line intersection.

April 17, 1970. Knutson dug for the corner, John Tupa from Hutchinson with a backhoe. They found a stone and a wood stake down $1\frac{1}{2}$ feet below the road surface.

Knutson set a McLeod County cast iron monument at the corner.

April 10, 1981. We found the monument and took extra reference ties. Old ties will be destroyed by road construction.

June 18, 1986. We found the top of the monument had been broken off by road construction. We set a $\frac{1}{2}$ inch by 14 inch iron pipe over the bottom half of the monument and took new reference ties.

May 2, 1990. We found the reference ties still good to the iron pipe.

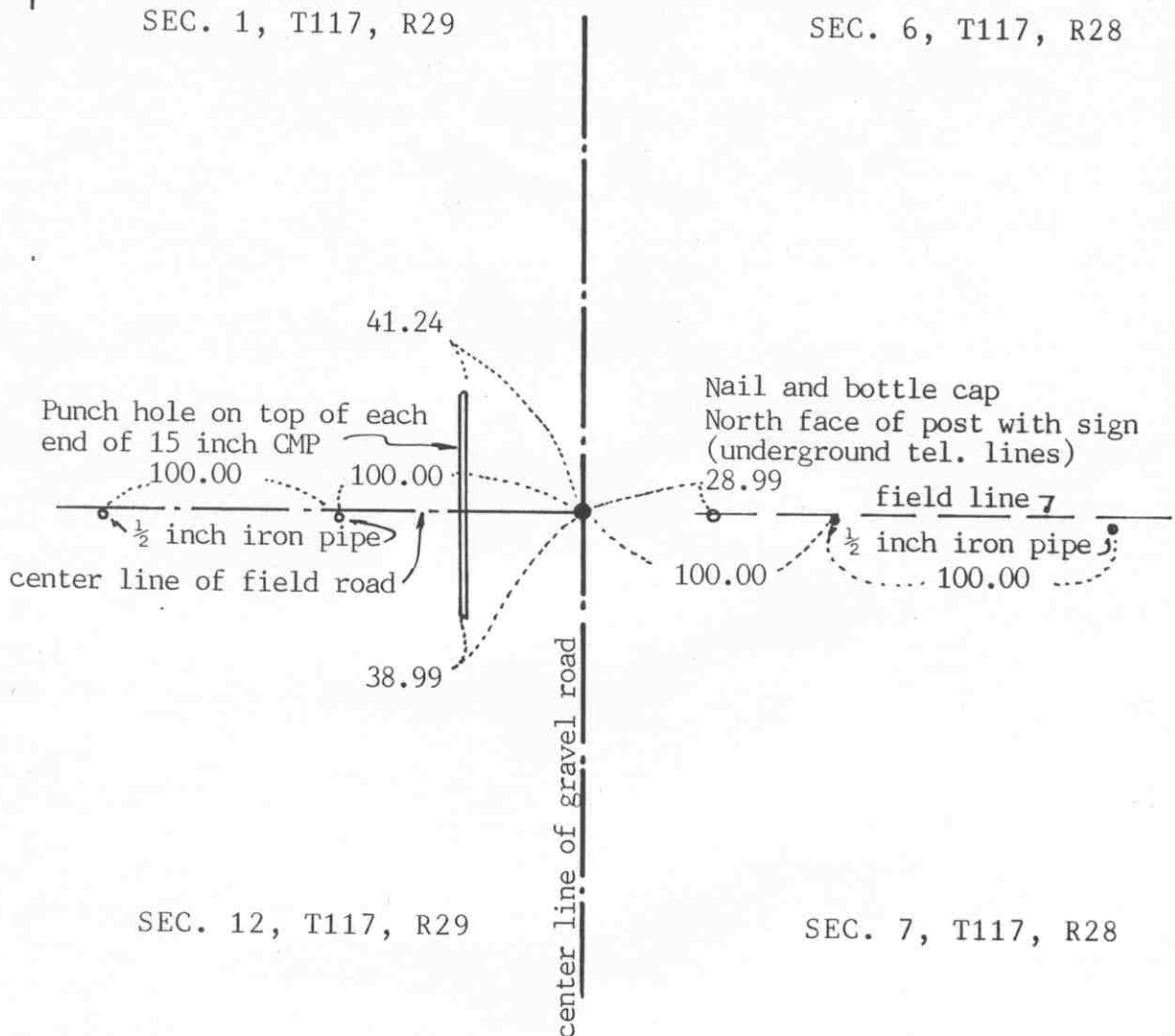
We accept the stone and wood stake found by Knutson as having perpetuated the correct location of the quarter corner.

NORTHEAST corner, Section 12, Township 117 North, Range 29 West

Certificate of Location of Government Corner

SKETCH OF REFERENCE TIES

(NO SCALE)



Statement of evidence relative to this corner location on sheet 2

I hereby certify that this document was prepared by me or under my direct supervision.

Willard Pellinen
Willard Pellinen
McLeod County Surveyor
License No. 9626

Date March 9, 1991

OFFICE OF THE COUNTY RECORDER
MCLEOD COUNTY, MINNESOTA.

I hereby certify that this document was filed in this office at 2 o'clock P.M. on the 1st day of April, 19 91.

Carmen O'Brien, County Recorder
By _____, Deputy

Document No. 238157

NORTHEAST corner, Section 12, Township 117 North, Range 29 West

Certificate of Location of Government Corner

August, 1855. John Ryan of the General Land Office established this corner. He set a post and marked 4 aspens for bearing trees.

September 19, 1969. McCombs Knutson Associates (Dickman Knutson, county surveyor) measured the east line of Sections 1 and 12 and set a temporary northeast corner of Section 12 on the center line of the road in line with a fence running east. Mr. Hlavka, 71 years old, who lives in the northwest quarter of Section 7 said the fence has been in the same place since his father used to farm.

April 17, 1970. Knutson dug for the corner, John Tupa from Hutchinson with a backhoe. They found a stone and a wood stake down 2 feet below the road surface on the center line of the road in line with the fence to the east. They took reference ties.

Knutson set a McLeod County cast iron monument at the corner.

April 8, 1981. We found the monument and set iron piped 100.00 feet east and 100.00 feet west, in line. The old reference ties to be destroyed by road construction.

June 18, 1986. We set an iron pipe over the cast iron monument which has been buried deep by road construction. We took new reference ties.

May 2, 1990. We found the iron pipe and the reference ties ok.

We accept the stone and wood stake found by Knutson as having perpetuated the correct location of the section corner.

NORTH QUARTER

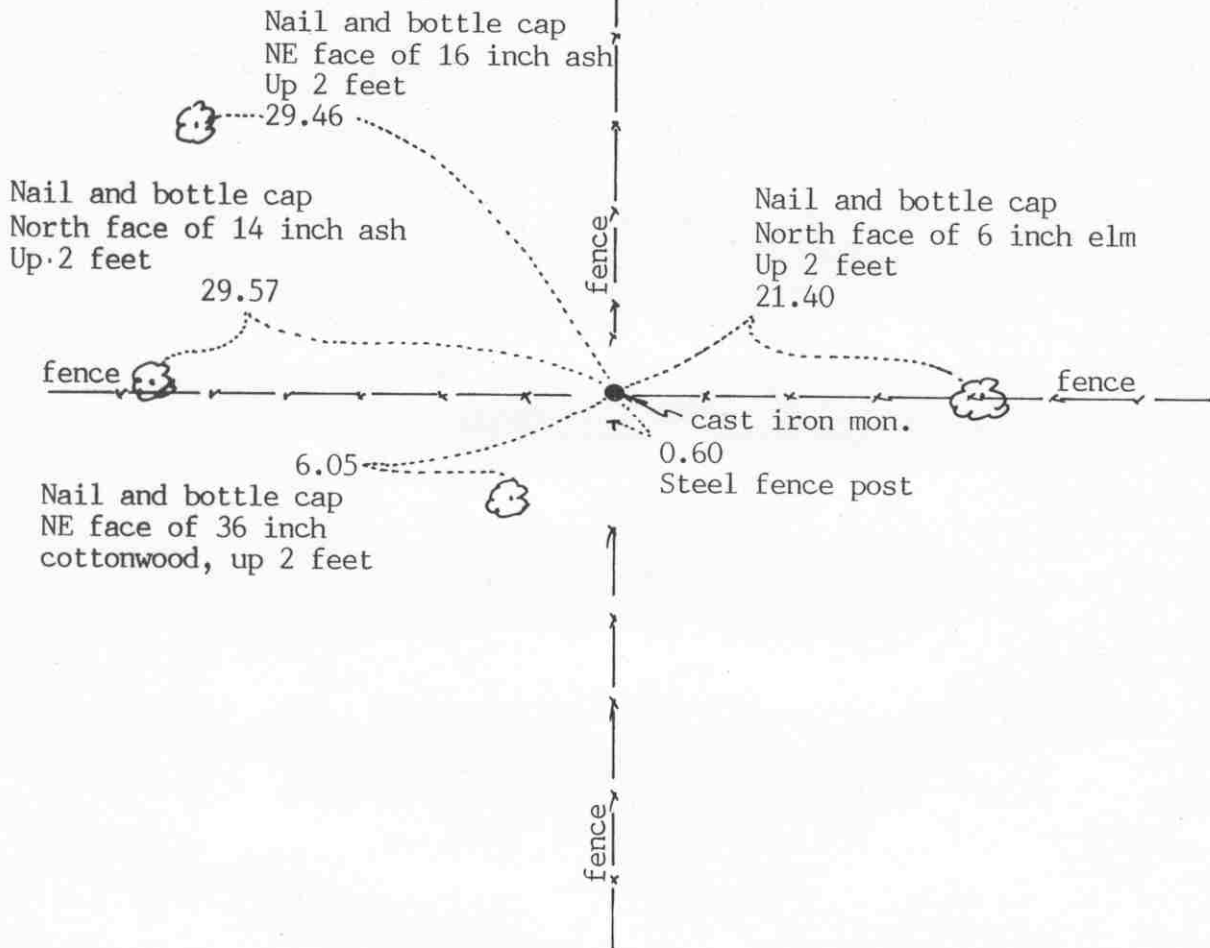
corner, Section 12, Township 117 North, Range 29 West

Certificate of Location of Government Corner

SKETCH OF REFERENCE TIES

(NO SCALE)

SECTION 1



SECTION 12

Statement of evidence relative to this corner location on sheet 2

I hereby certify that this document was prepared by me or under my direct supervision.

Willard Pellinen

Willard Pellinen
McLeod County Surveyor
License No. 9626

Date April 13, 1991

OFFICE OF THE COUNTY RECORDER
MCLEOD COUNTY, MINNESOTA.

I hereby certify that this document was filed in this office at 9 o'clock A.M. on the 19th day of April, 1991.

Carmen Ostlie, County Recorder

By _____, Deputy

Document No. 238418

NORTH QUARTER corner, Section 12, Township 117 North, Range 29 West

Certificate of Location of Government Corner

May, 1856. The Public Land Survey was run by A.H. Runyon, who set a post and marked an elm and an oak for bearing trees.

January, 1974. McCombs Knutson Associates (Dickman Knutson, county surveyor) talked with the adjoining land owners and they all agree the fence intersection is the quarter corner. Fences running north, south, east and west.

October 15, 1975. Knutson replaced the old rotted corner fence post with a McLeod County cast iron monument, and took available reference ties.

May 2, 1990. We found the monument in good condition 3 inches below the ground surface but all the reference ties had been destroyed. We took new available ties.

We accept the old fence intersection as having perpetuated the correct location of the quarter corner.